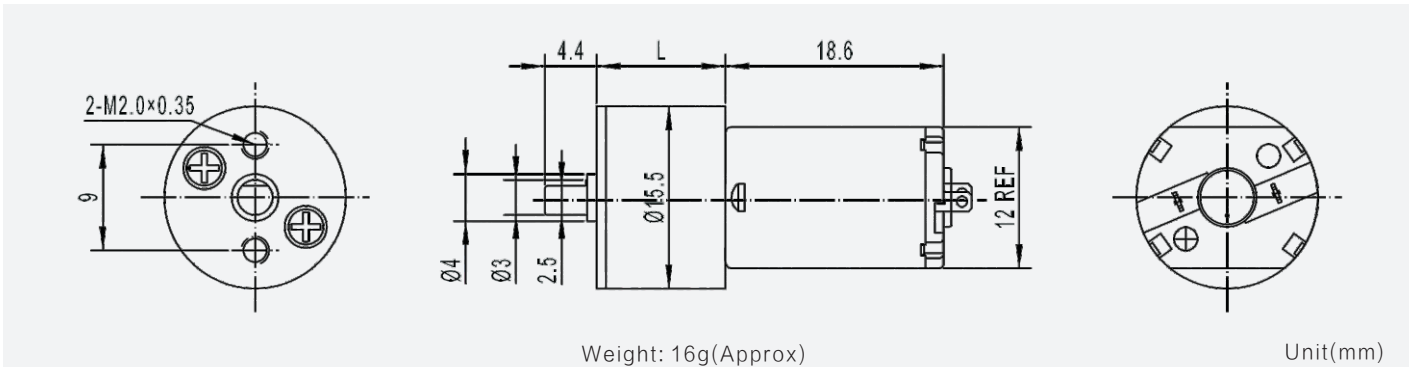
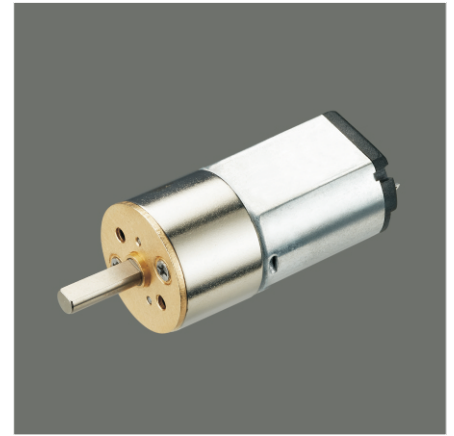


# GM16-030PA

16mm gearbox plus 030 permanent magnet DC motor

Module	0.15		
Rated torque (kg.cm)	0.5 kg.cm max		
Max momentary tolerance torque (kg.cm)	1.0 kg.cm max		
Reduction ratio	1/10	1/17、1/20、1/35 1/63、1/86	1/115、1/150 1/250、1/360
Number of gear stages	2	4	5
Gearbox length L (mm)	11.0		



## Gear Motor Technical Data

		10	20	35	63	86	115	150	250	360
<b>6.0V</b>	<b>Reduction ratio</b>	10	20	35	63	86	115	150	250	360
	<b>No-load speed(rpm)</b>	1100	550	310	175	130	96	73	44	30
	<b>Rated speed(rpm)</b>	900	450	260	140	105	78	60	38	28
	<b>Rated torque(kg.cm)</b>	0.03	0.06	0.1	0.19	0.26	0.35	0.45	0.5	0.5
<b>12.0V</b>	<b>No-load speed(rpm)</b>	1200	610	350	195	140	105	83	50	35
	<b>Rated speed(rpm)</b>	975	485	280	155	110	85	65	41	30
	<b>Rated torque(kg.cm)</b>	0.03	0.06	0.48	0.19	0.26	1.6	0.45	0.5	0.5

## Motor Technical Data

Motor model	Rated voltage	No-load		Rated			Stall		
		Speed	Current	Speed	Torque	Current	Power	Torque	Current
	VDC	r/min	mA	r/min	g.cm	mA	W	g.cm	A
<b>TFF-030PA-09220</b>	6.0	11500	35	9000	5.0	140	0.45	23	0.60
<b>TFF-030PA-06400</b>	12.0	12500	20	9750	5.0	75	0.50	23	0.27

