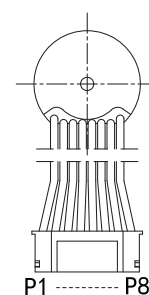
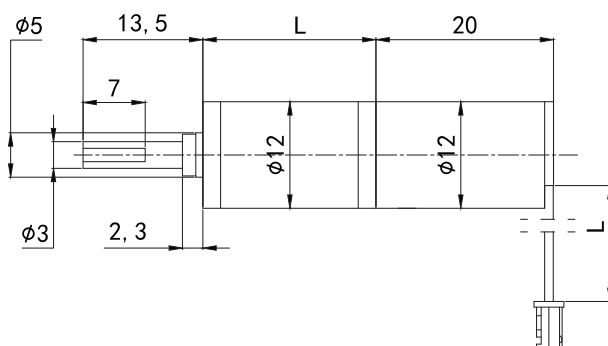
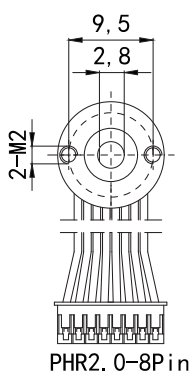


# GM P12-TBC1220

12mm planetary gearbox plus 1220 brushless motor



Module	0.25					
Rated torque (kg.cm)	2.0kg.cm max					
Max momentary tolerance torque (kg.cm)	4.0kg.cm max					
Reduction ratio	1/4	1/16	1/64	1/256	1/1024	1/4096
Number of gear stages	1	2	3	4	5	6
Gearbox length L (mm)	16	19	22	25	28	31



Weight: 50 (Approx)

Unit(mm)

## Gear Motor Technical Data

		Reduction ratio	4	16	64	256	1024	4096			
6V	No-load speed(rpm)		4500	1125	281	70	18	4			
	Rated speed(rpm)		3825	956	239	60	15	4			
	Rated torque(kg.cm)		0.03	0.12	0.45	1.68	2.00	2.00			
12V	No-load speed(rpm)		6519	1630	407	102	25	6			
	Rated speed(rpm)		5541	1385	346	87	22	5			
	Rated torque(kg.cm)		0.04	0.15	0.56	1.98	2.00	2.00			

## Motor Technical Data

Motor model	Rated voltage	No-load		Rated				Stall	
		Speed	Current	Speed	Torque	Current	Power	Torque	Current
	VDC	r/min	mA	r/min	g.cm	A	W	g.cm	A
TBC1220-06180	6	18000	102	15300	8.8	0.4	1.4	58.5	2
TBC1220-12260	12	26075	84	22164	10.3	0.3	2.4	68.8	1.7

