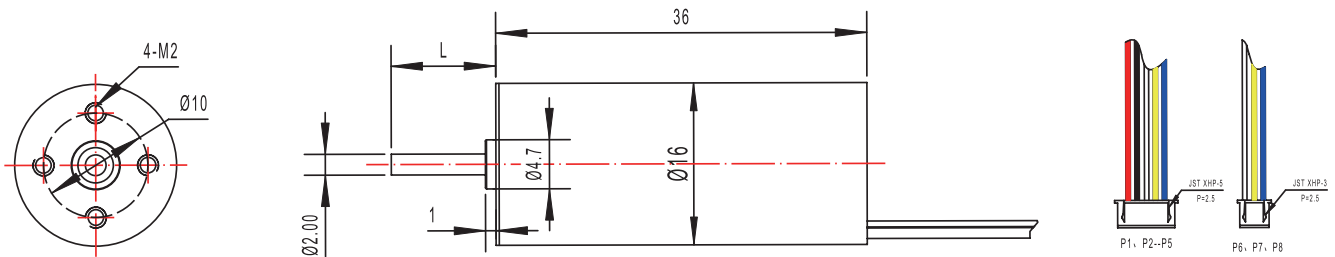
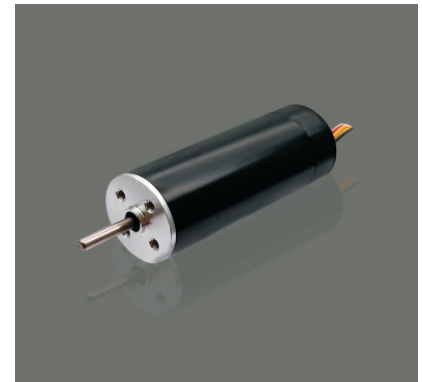


# TEC1636

16mm brushless motor

Connection Mode C	
Clockwise Rotation/Counter Clockwise Rotation	
FG Signal	
PWM Control	
Locked Rotor Protection	
Power	3W(Internal Drive)
	/
Life Expectancy	~3000H(Oil Bearing)
	/

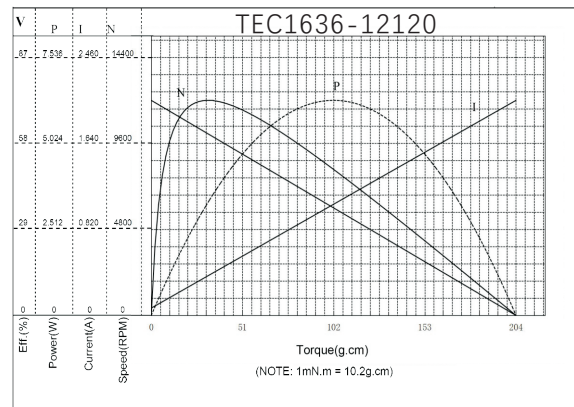
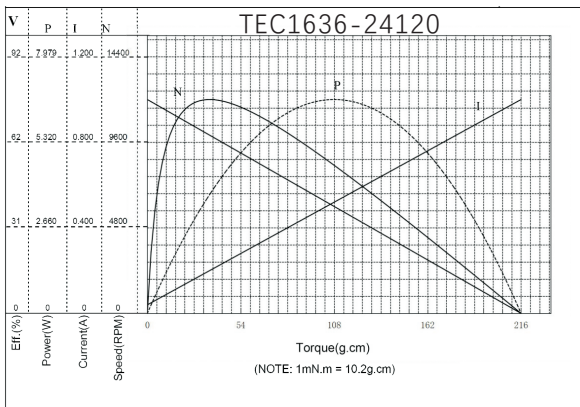


Weight: 30g(Approx)

Unit(mm)

## Motor Technical Data

Motor model	Rated voltage	No-load		Rated				Stall	
		Speed	Current	Speed	Torque	Current	Power	Torque	Current
	VDC	r/min	mA	r/min	g.cm	mA	W	g.cm	A
TEC1636-12120	12V	12000	70	10082	32.6	390	3.37	204	2.1
TEC1636-24120	24V	12000	40	10189	32.6	180	3.41	216	1.0



NOTE: the left side of red line area can continuous work